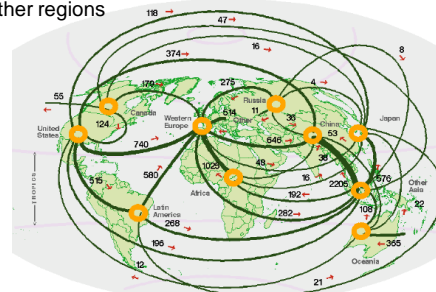


Demands for Setting up a Latin American LCA Database

Cássia Maria Lie Ugaya
Claudia Peña

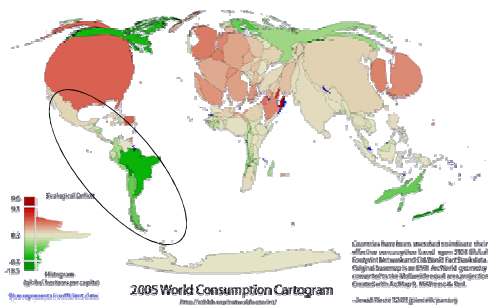
Introduction

- Life cycle assessment of products demands data from other regions

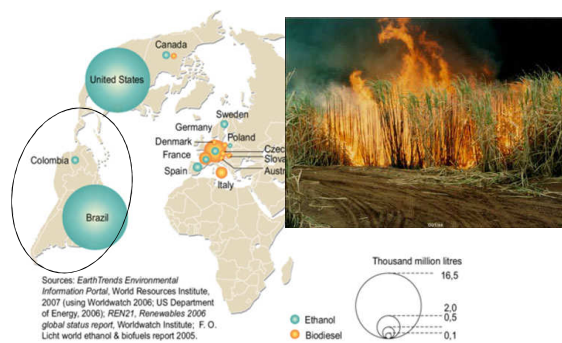


FAO, 200-?

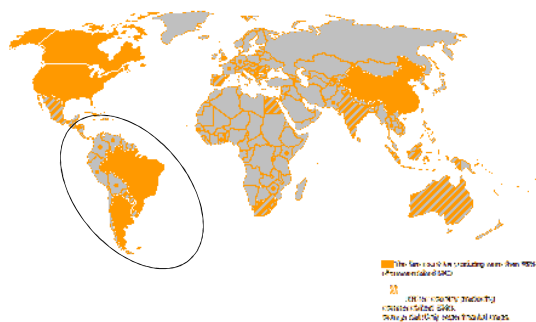
World Per Capita Consumption



Biofuel production



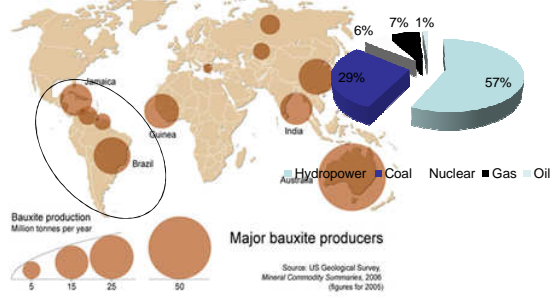
Latin America Production - GMO



World Iron Ore Mining



Bauxite production

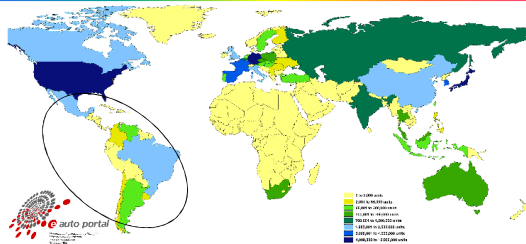


World Gold Production



Valdivia, 2007

Automobile production



- Raise of LCA interest in the region:
 - CILCA (2005 - Costa Rica, 2007 - Brazil, 2009 - Chile)
 - Mexico (2011)
 - National events (Brazil, Peru, Mexico)
 - Cuba (June/2010), Brazil (October/2010)

Few LCI in the region

Country	LCI activities	National database	Funding	Database covered sectors
Brazil	University, Company		Government	Hydroelectricity, Road transportation, Oil products, Biofuels
Mexico	Center		Government and Private	Energy, Minerals, Chemicals, Transport, Agriculture, Wood and building materials, Leather and textiles
Cuba	Universities		Private, Ministry involvement	Sugar products
Peru	Universities, oil company			Gold
Costa Rica	University			Biofuel
Chile	CIMM			Copper, fuel treatment
Argentina	University			
Colombia	University			

Few LCI in the region

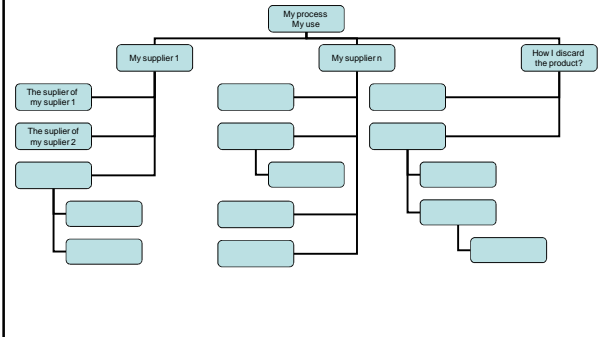


- Developed separately
- UNEP/SETAC Life Cycle Initiative approved an LCI Project in Latin America

Consistency

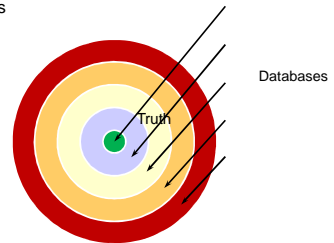
■ Mandatory
■ Recommended
■ Optional

Truth about Good Quality LCA



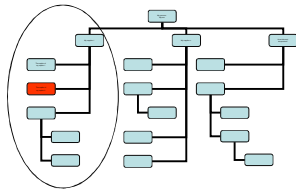
National / regional / global database

- Better use of resources



Simplified LCAs

- Adaptation is necessary:
 - Easy to adapt
 - unit process than system
 - transparency is necessary
- Simple rules



Thanks for your attention!

Cassia Maria Lie Ugaya
cassiaugaya@utfpr.edu.br